

A

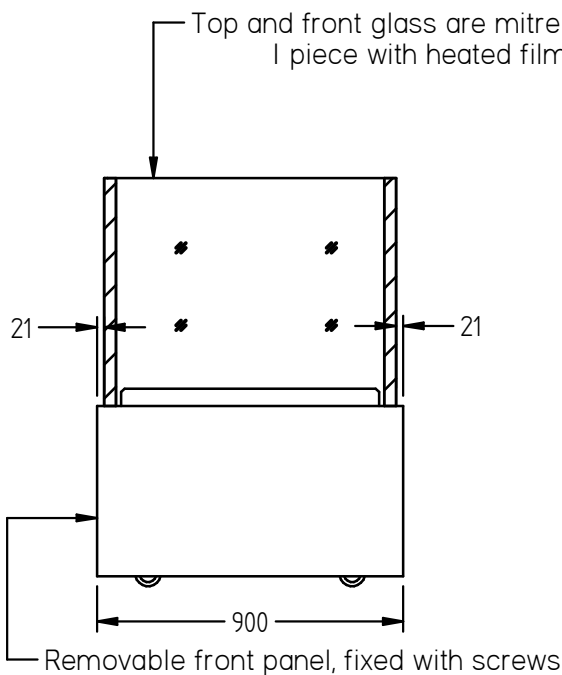
B

C

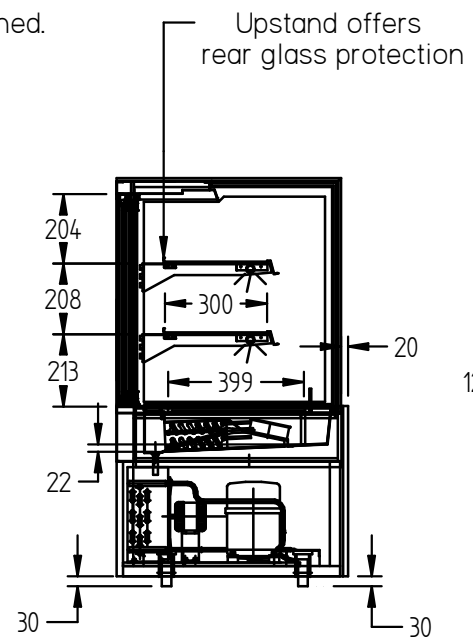
D

E

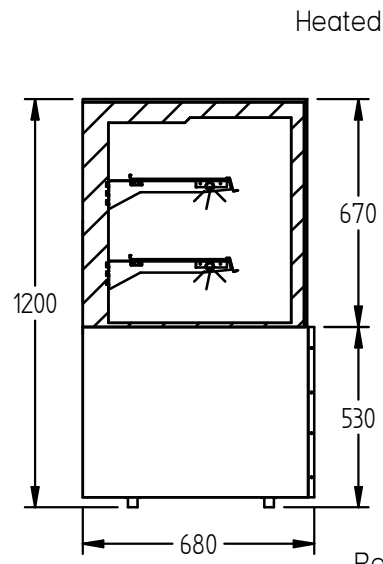
F



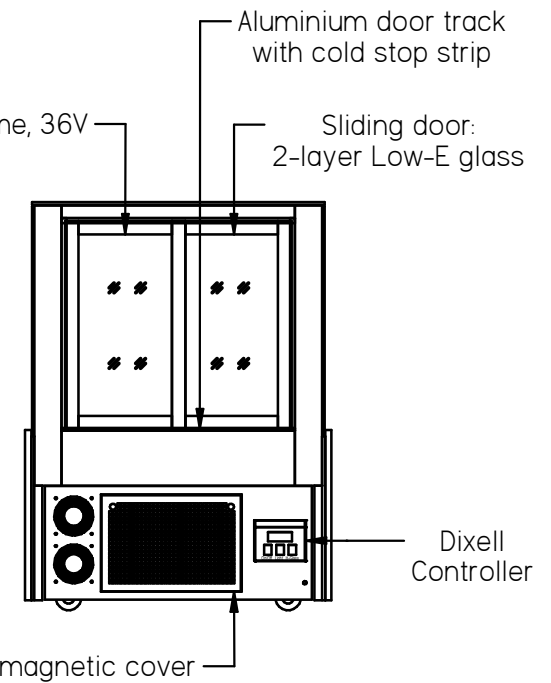
Front View



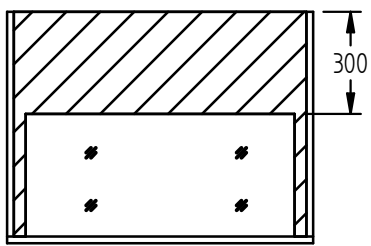
Section View



Side View



Back View



Top View

Technical Data:

1. Dimension: 900\*680\*1200Hmm
2. Fan cooling
3. Temp: 2°C - 6°C
4. Base: 430, grain finished S/S, interior: 430 mirror S/S
5. LED light: white color 5000K, 12V
6. Coated glass: black
7. Power: 220V/50HZ, Australia plug
8. Shelving: 1 piece shelf, black coated. Includes LED
9. R134a/R404a refrigerant.

REV	DESCRIPTION	DATE	BY
-	-	-	-

**williams**  
 REFRIGERATION AUST. PTY. LTD  
 This drawing and all copies produced remain the property of Williams Refrigeration and must not be copied or distributed by any third party without obtaining authorisation

UNLESS OTHERWISE STATED ALL DIMENSIONS IN MILLIMETERS.  
 GENERAL TOLERANCES:  
 LINEAR +/-0.5  
 ANGULAR +/-1°

DRAWN: AJ	MATERIAL: -	Location: -
DATE: 28/07/23	MODEL: HTG9	
CHECKED: E.B.	TITLE: CAKE & FOOD DISPLAY 900 WIDE, STANDARD VERSION	DWG: HTG9
DRAFTING STANDARD AS 1100		

DWG: HTG9
-----------